



| | |
|---|---|
| Engine | Perkins 1104D-44TA |
| Gross Power | 74.5 kW (100 hp / 101 ps) @ 2,200 rpm |
| Net Power | 72 kW (97 hp / 98 ps) @ 2,200 rpm |
| Maximum Speed | 36 km/h |
| Standard Loader Bucket Capacity | 1.0 m ³ |
| Standard Backhoe Bucket Capacity | 0.2 m ³ |
| Operating Weight | 8,400 kg |

777A BACKHOE LOADER

777A SPECIFICATIONS >>>

ENGINE

| | |
|---------------------|---|
| Emission Regulation | Tier 3 / Stage IIIA |
| Manufacturer | Perkins |
| Model | 1104D-44TA |
| Gross Power | 74.5 kW (100 hp / 101 ps) @ 2,200 rpm |
| Net Power | 72 kW (97 hp / 98 ps) @ 2,200 rpm |
| Peak Torque | 410 N · m @ 1,400 rpm |
| Displacement | 4.4 L |

ELECTRICAL SYSTEM

| | |
|----------------|-------------|
| System Voltage | 12 V |
| Battery Rating | 95 amp - hr |

DRIVE TRAIN

| | |
|---------------------------------------|-----------|
| Number of Drive Wheels | 2WD / 4WD |
| 1st Maximum Speed, fwd/rev | 5.9 km/h |
| 2nd Maximum Speed, fwd/rev | 10.7 km/h |
| 3rd Maximum Speed, fwd/rev | 20.5 km/h |
| 4th Maximum Speed, fwd/rev | 36 km/h |
| Turning Radius, Outside of Front Tire | 4,400 mm |
| Turning Radius, Outside of Bucket | 5,554 mm |

BRAKES

| | |
|-------------------------|-------------------|
| Service Brake Type | Wet disc |
| Service Brake Actuation | Hydraulic service |

TIRES

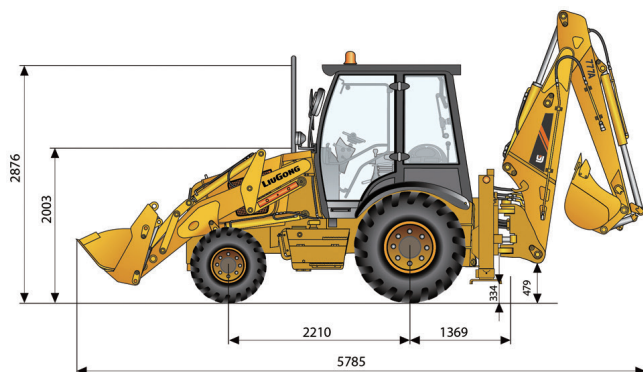
| | |
|-----------------|-----------------------|
| Front Tire Size | 14 - 17.5NHS - 14RP T |
| Rear Tire Size | 19.5 -24NHS -14PR T |

HYDRAULIC SYSTEM

| | |
|----------------------|------------------|
| Circuit Type | Open |
| Total Flow | 143 L/min |
| Main Relief Pressure | 24 MPa |
| Pump Type | Tandem gear pump |
| Steering Type | Priority valve |

OPERATING WEIGHTS

| | |
|------------------|----------|
| Operating Weight | 8,400 kg |
|------------------|----------|



LOADER PERFORMANCE

| | |
|-------------------------------------|--------------------|
| Standard Bucket Type (referenced) | General bucket |
| Heaped Capacity ISO (referenced) | 1.0 m ³ |
| Standard Bucket Width (referenced) | 2,260 mm |
| Lift Capacity at Full Height | 30.2 kN |
| Bucket Breakout Force | 59.3 kN |
| Maximum Dump Angle at Full Height | 45° |
| Dump Height at Maximum Angle | 2,691 mm |
| Dump Reach at Full Height Discharge | 713 mm |
| Boom Lift Capacity, end, at ground | 49.3 kN |
| Maximum Dig Depth | 89 mm |

BACKHOE PERFORMANCE

| | |
|--------------------------------------|--------------------|
| Standard Bucket Type (referenced) | General bucket |
| Heaped Capacity ISO (referenced) | 0.2 m ³ |
| Standard Bucket Width (referenced) | 610 mm |
| Maximum Dig Depth | 4,440 mm |
| Reach From Swing Pivot at Ground | 5,443 mm |
| Turning Angle of Bucket | 186° |
| Bucket Digging Force | 58.2 kN |
| Dipper Digging Force, standard stick | 37.5 kN |
| Loading Height | 3,586 mm |
| Loading Reach from Swing Pivot | 3,007 mm |

SERVICE CAPACITIES

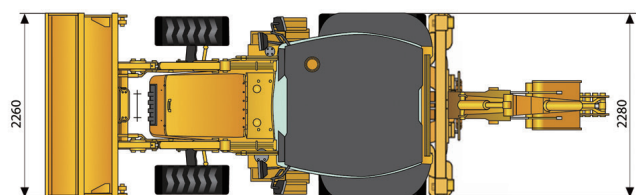
| | |
|-----------------------------------|-------|
| Fuel Tank | 130 L |
| Engine Oil | 7 L |
| Cooling System | 23 L |
| Hydraulic Reservoir | 130 L |
| Hydraulic System Total | 170 L |
| Transmission and Torque Converter | 16 L |
| Axle, front | 6.9 L |
| Axle, rear | 16 L |

STANDARD EQUIPMENT

| |
|---|
| Perkins1104D-44TA engine |
| Carraro Transmission |
| Open Cab, ROPS / FOPS |
| Auxiliary Hydraulic Kit |
| Carraro 4 x 2 Axles |
| Boom Interlock |
| General Purpose Bucket 1.0 m ³ |
| Seat Belt |

OPTIONAL EQUIPMENT

| |
|-----------------------------------|
| Enclosed Cab, ROPS/ FOPS, with AC |
| Rotary Beacon |
| Hydraulic Shear |
| Vibratory Tamper |
| Hydraulic Hammer |
| Carraro 4 x 4 Axles |
| 4 in 1 Bucket 1.0 m ³ |
| Telescopic Boom |



Unit:mm

Guangxi Liugong Machinery Co., Ltd.

No. 1 Liutai Road, Liuzhou, Guangxi 545007, PR China
T: +86 772 3886124 E: overseas@liugong.com
www.liugong.com

Specifications and designs are subject to change without notice. Machines shown may include optional equipment. Liugong standard and optional equipment may vary from region to region. Please consult your Liugong dealer for information specific to your area. Engine power kW is converted to horsepower (1 kW=1.3596 ps and 1 kW=1.3410 hp) in this file.

04/2020 Designed by LiuGong
Replace the previous versions of 06/2019